

Framed – with Border

Finished Quilt Size: 50 by 70 inches
Finished Block Size: 8 inches
Arrange: 5 by 7 blocks
Total of 35 Squares in total (18 theme and 17 strips)

Kit Requirements

1 M Theme Fabric
.3 M of 1st Frame Fabrics
.3 M of 2nd Frame Fabrics
.5 M Light Print
1 M Border
.5 M Binding

Minimum Fabric Yardage

WOF – Width of Fabric (42 inches) – Remove selvage and make a straight cut

Theme Fabric: 34 inches

Frame 1 & 2: 10 inches each

Neutral: Light print: 18 inches

Border: 37 inches

Binding: 17½ inches

Cutting

Theme blocks: 4 – WOF by 8½ inch strips and cross cut each into 5 - 8½ inch squares (you will get 20 squares and you need 18 squares)

Frame 1 & 2: 4 – WOF by 2½ inch strips

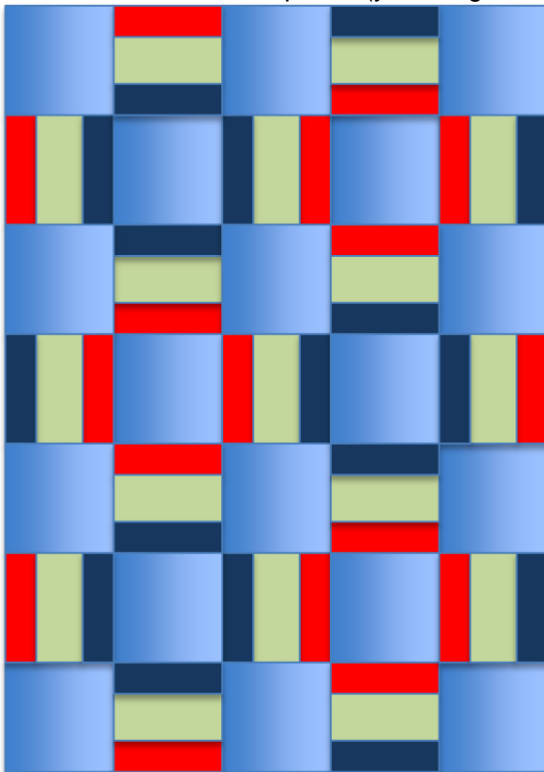
Neutral: 4 – WOF by 4½ inch strips

Border: 2 – WOF by 7½ inches (for top and bottom) and 4 – WOF by 5½ inches (for sides)

Binding: 7 – WOF by 2½ inch strips

Directions

- Using a ¼ inch seam allowance, sew strips of Frame 1, Neutral and Frame 2. The 4½ inch neutral piece in the centre
- Cross cut into 8½ inch squares (you will get 20 and you need 17)



Assemble the Quilt

- Sew the blocks together in rows as shown in the diagram, alternating block types. Press seams in odd row to the left and even rows to the right. Sew rows of blocks together
- **Border** – Measure the width of the quilt and cut 2 – 7½ inch border strips that length. Sew to top and bottom of quilt. Press toward the border. Sew remaining 5½ inch border strips together lengthwise. Measure the length of the quilt and cut 2 – 5½ inch border strips that length. Sew to sides of quilt. Press towards the border
- **Completing** – Press quilt top. Make a sandwich of quilt, batting and backing
- Quilt as desired.
- Attach a VQC (Victoria Quilt's Canada) Bilingual Label to one corner of the back of the quilt.
- Join the binding strips using a diagonal/bias seam for less bulk and press open. Press the binding in half wrong sides together. Bind the quilt.
- Gently wash the quilt using unscented products. Trim any loose threads.

